

# Public Document Pack



County Hall  
Rhadyr  
Usk  
NP15 1GA

Monday, 5 February 2018

## Notice of Reports Received following Publication of Agenda.

### Special Meeting - Children and Young People Select Committee

Tuesday, 13th February, 2018 at 10.00 am,  
The Council Chamber, County Hall, The Rhadyr, Usk, NP15 1GA

Attached are reports that the committee will consider as part of the original agenda but were submitted to democratic services following publication of the agenda.

Item No	Item	Pages
5.	Key Stages 4 and 5 Outcomes.	1 - 12

**Paul Matthews**  
Chief Executive

This page is intentionally left blank

**SUBJECT: Key Stage 4 and 5 Performance Summary 2016/17 (January 2018)**

**DIRCTORATE: CHILDREN AND YOUNG PEOPLE**

**MEETING: CYP SELECT COMMITTEE**

**DATE: 13<sup>th</sup> March 2018**

**DIVISION/WARDS AFFECTED: ALL**

**1. PURPOSE:**

The purpose of this report is to provide members of Children and Young People's (CYP) Select Committee with a summary of validated Key Stage 4 and 5 data across the Monmouthshire for the academic year 2016/17.

**2. RECOMMENDATIONS:**

It is recommended that Select Members:

- 2.1 Receive the report Key Stages 4 and 5 Performance Summary (January 2018)
- 2.2 Scrutinise the information provided in this report and the following attached paper:
  - Monmouthshire Key Stage 4/Key Stage 5 Performance Report (January 2018)
- 2.3 To consider any issues arising from the report and evaluate the impact of the Directorate and the Educational Achievement Service (EAS) in supporting and challenging schools to secure high standards in Monmouthshire.

**3. KEY ISSUES:**

Key Stage 4

- Significant revisions to examinations in 2016/17 means that it is not possible to make a meaningful comparison to previous years.
- Performance in 2017 in the Level 2 threshold including English/Welsh and mathematics is consistent with 2016 and the highest in Wales
- Results across all indicators at the end of Key Stage 4 in 2017 are above the national average.
- The decline in performance in the Level 2 threshold reflects the trend across Wales in 2017. The decline in performance in Monmouthshire for this indicator is smaller than the national average. Monmouthshire is ranked second for this indicator.
- Performance in the Level 1 threshold in 2017 is 1.9 percentage points below 2016 and reflecting the national trend this year however, the decline in

Monmouthshire is greater than the decline across Wales. As a result, Monmouthshire is ranked 14<sup>th</sup> in Wales.

- Performance in Capped Point 9 is significantly above the national average and places Monmouthshire third in Wales. This is the first year for this indicator.
- Results in English and science (A\* - C) are lower than in 2017 and reflect the national trend for these subjects. However, performance in Monmouthshire for both subjects is above the national average.
- Performance in mathematics in Monmouthshire is higher than in 2016 and does not reflect the declining trend across Wales in 2017.
- Overall, in 2017, Monmouthshire is ranked first for English and mathematics and eighth for science.
- Pupil performance at the 5A\*/A grades increased significantly in 2017 compared to 2016 and as a result, Monmouthshire is above the Wales average for this indicator the first time in the last five years.
- The gap in gender performance has narrowed in 2017 to 4.9 percentage points in favour of girls. The gap in Monmouthshire is now narrower than across Wales.
- The gap in performance between FSM pupils and non-FSM pupils in Monmouthshire in 2017 has widened for the Level 2 threshold including English/Welsh and mathematics compared to 2016.
- The majority of schools Monmouthshire secondary schools are in the bottom FSM benchmark quartile for the Level 1 threshold in 2017 indicating a three-year declining trend.
- Monmouthshire's performance compared to the Welsh Government Modelled Expectations continues a four year improving trend in both the Level 2 Threshold including English/Welsh and mathematics and Capped Average Wider Point Score (replace by Capped 9 in 2017).

#### Key Stage 5

- Overall performance in the Level 3 threshold including vocational qualifications decreased by 1.8 percentage points in Monmouthshire in 2017 compared to the previous year.
- This decrease is greater than across the region and nationally.

#### **4. REASONS:**

- To provide the Members of CYP Select Committee with appropriate and timely data to facilitate effective scrutiny of a range of school performance indicators.

#### **5. RESOURCE IMPLICATIONS:**

None

#### **6. SUSTAINABLE DEVELOPMENT AND EQUALITY IMPLICATIONS:**

EQIA not applicable

**7. CONSULTEES:**

Cabinet Member

Chief Officer Education

Departmental Leadership Team

**8. BACKGROUND PAPERS:**

Receive the report Key Stages 4 and 5 Performance Report (January 2018)

**9. AUTHOR:**

Sharon Randall-Smith

**10. CONTACT DETAILS:**

**Tel: 01644 644203**

**Mob: 07816176930**

**E-mail: [SharonRandall-Smith@monmouthshire.gov.uk](mailto:SharonRandall-Smith@monmouthshire.gov.uk)**

## Monmouthshire

### Key Stage 4 / Key Stage 5 Performance Report (January 2018)

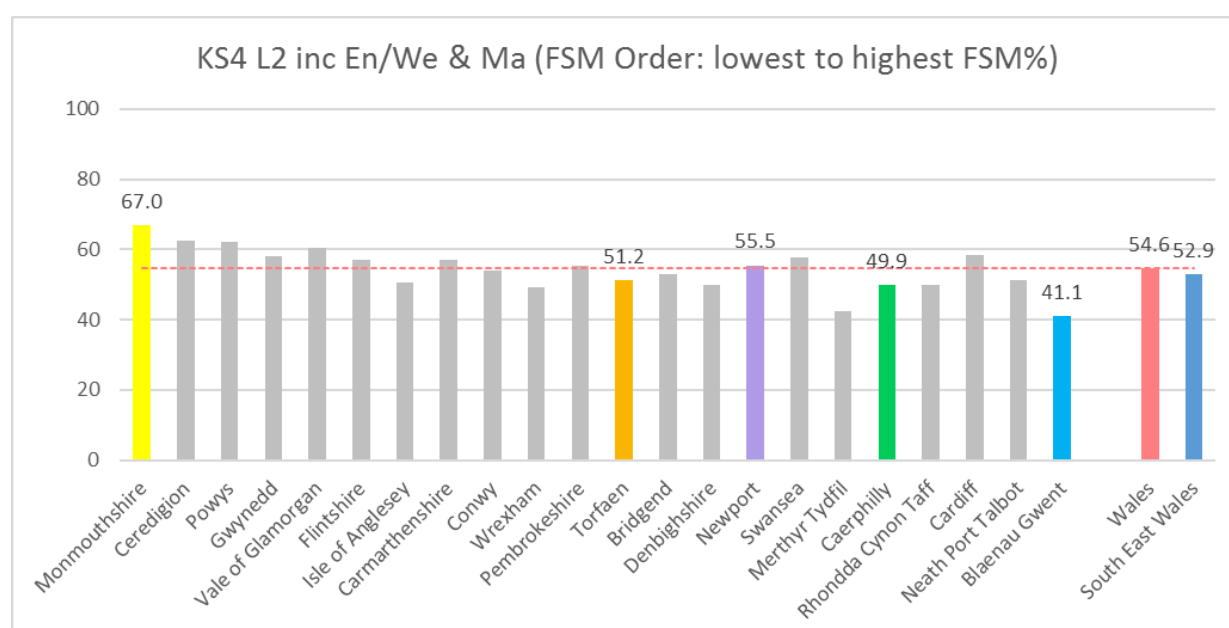
At Key Stage 4, the following key performance measures are used to evaluate and compare the full range of achievement within and across local authorities:

- Level 2 threshold including English or Welsh first language and best of mathematics/numeracy (L2+)
- Level 2 threshold (L2)
- Level 1 threshold (L1)
- Core Subject Indicator (CSI)
- Capped Points 9 (CP9)
- A\*-C in English or Welsh first language GCSE
- A\*-C in mathematics/numeracy GCSE
- Level 2 qualification (equivalent to GCSE A\*-C) in science

This year it is not possible to meaningfully compare regional or local authority results to previous years. This is due to significant revisions to examinations that means they focus in part on different skill sets and knowledge than in previous years. Despite this, the region is already working with schools to track individual pupil performance over time. This will mean that school leaders and our local authorities are well positioned to gauge where schools are progressing well or where they may need additional support.

Communications from the examination awarding body and the regulator throughout this academic year indicated that this variability was to be expected, and this is reflected in regional results. As in previous years, we have been talking to post-16 providers to ensure that no learner is disadvantaged and that they are provided with appropriate pathways following results.

The proportion of pupils achieving the Level 2 threshold inclusive of English/Welsh first language and mathematics remains stable from 67.0% in 2016 to 67.0% in 2017.



## Performance against Targets

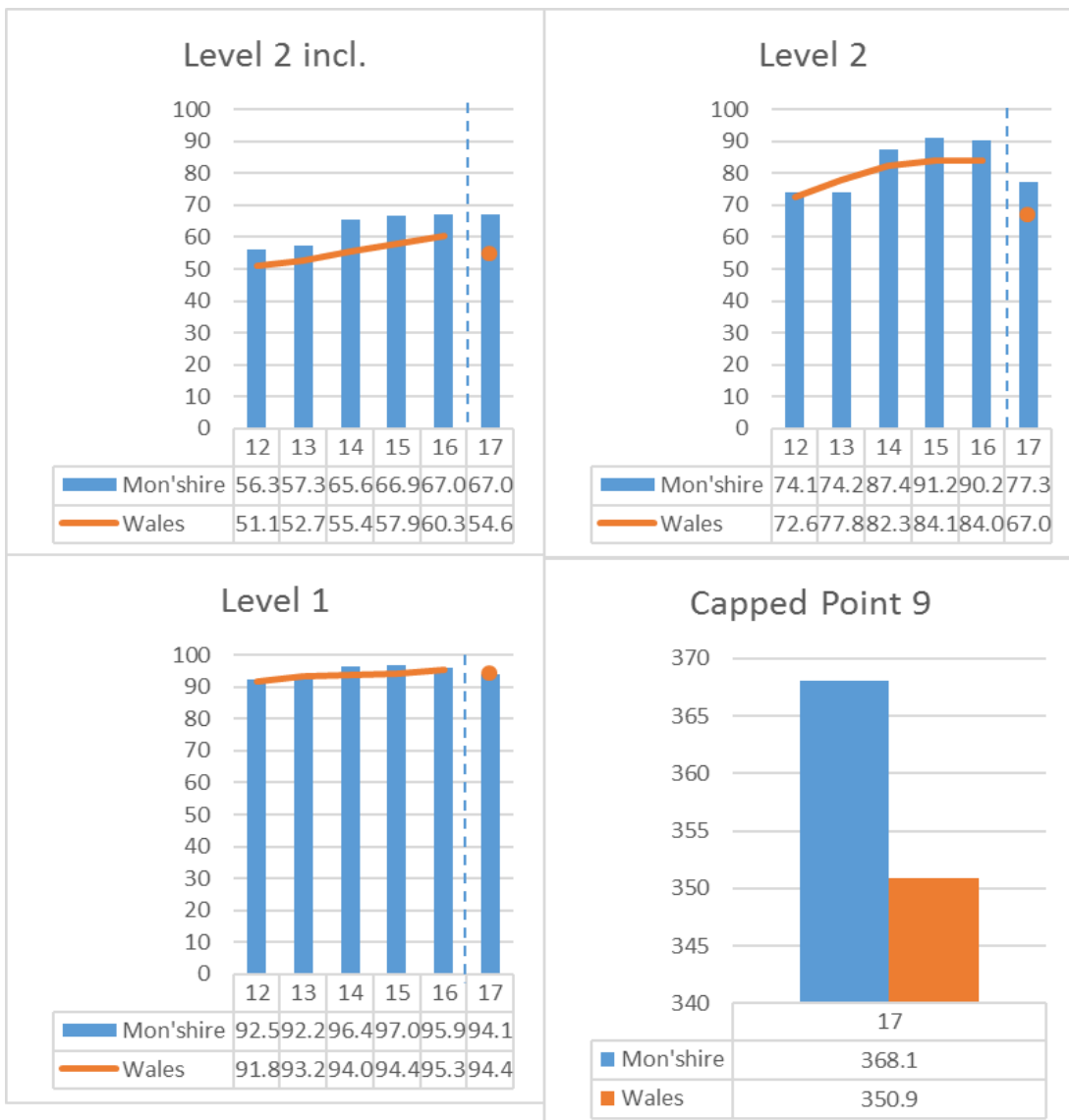
When comparing results against June predictions, all of the four secondary schools in the county reported performance within 5 pp of their June estimates.

## FSM L2 inclusive threshold

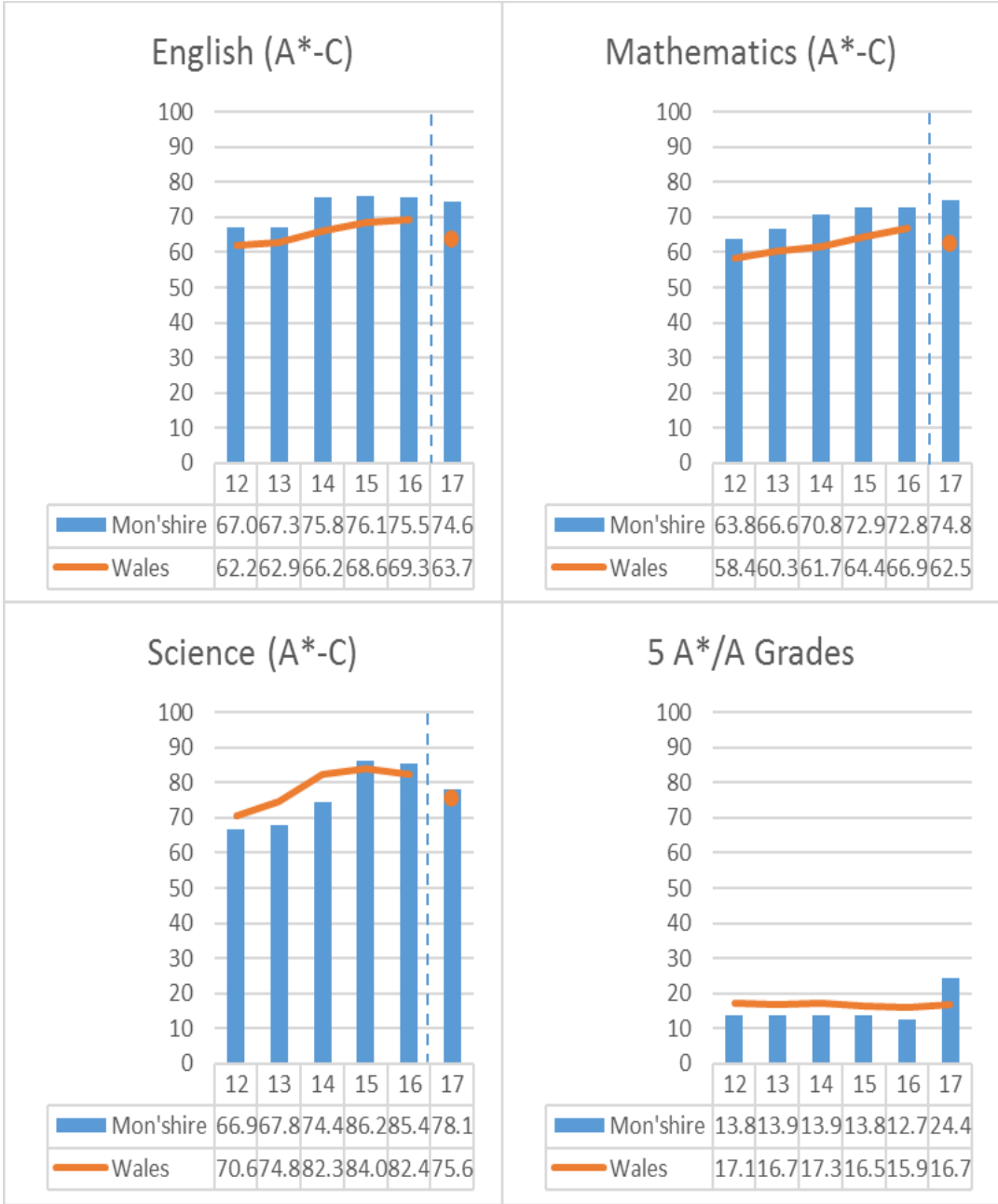
L2 inclusive threshold performance of FSM pupils in 2017 has declined by 3.1 pp to 27.9%. In comparison, the national FSM average declined by 7 pp from 35.6% to 28.6%. The FSM/non FSM gap has increased from 41.2 pp to 43.7 pp.

Only Chepstow and Caldicot reported improved FSM performance this year.

All indicators are above the national average, despite a decline at L2 and L1.



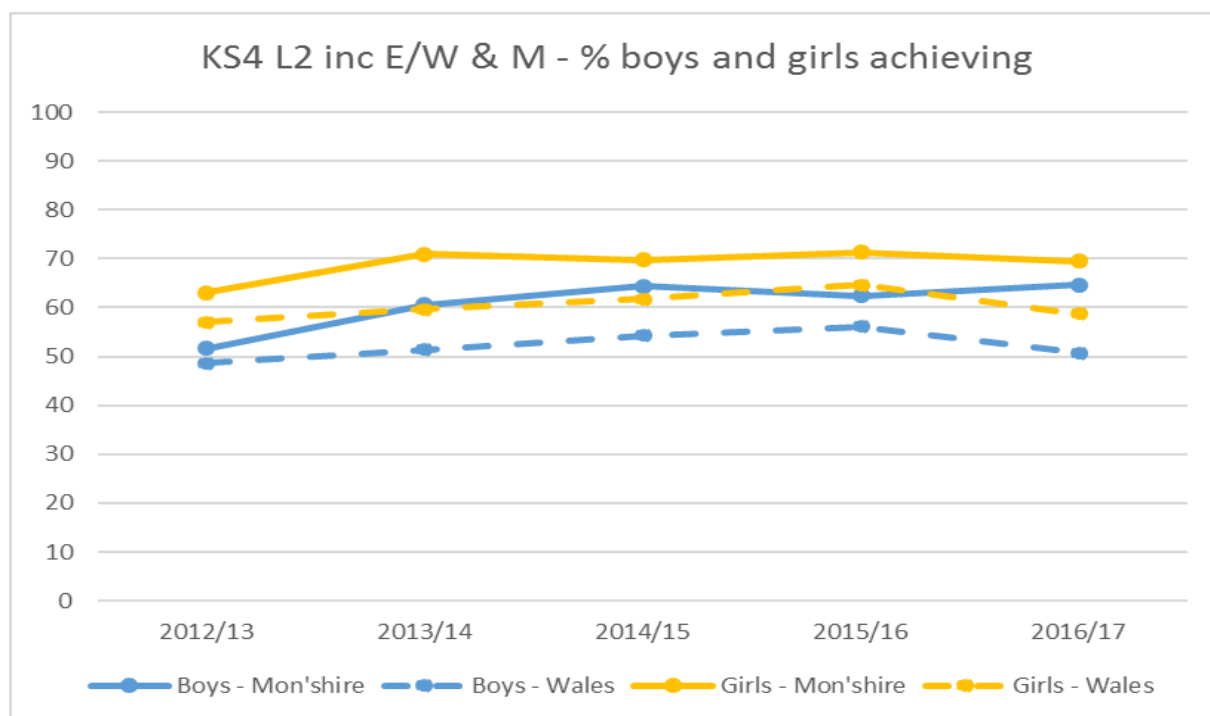
There were slight declines in English and science, but an increase in maths and a large increase at 5A\*/A grades. All indicators remain above the national average.





## Gender Differences

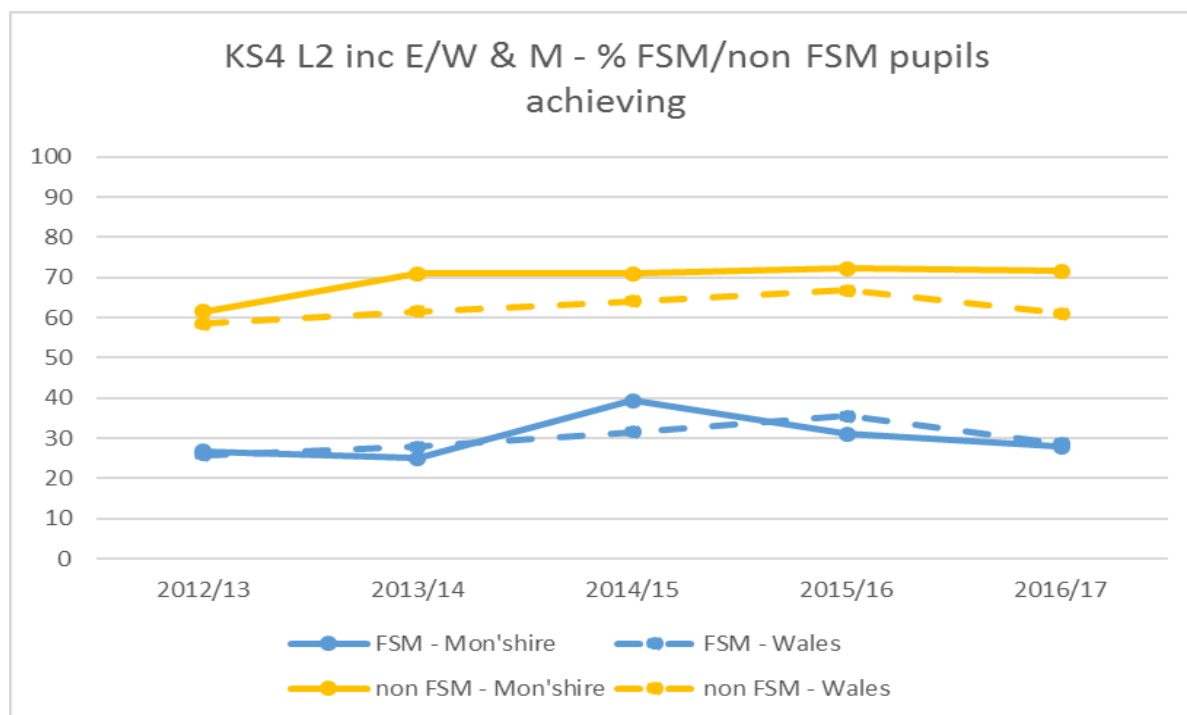
The gender gap narrowed in 2017 for the Level 2 threshold inclusive of English/Welsh first language and mathematics from a 8.9 points gap in 2016 to a 4.9 points gap in 2017. The gap is now narrower than across Wales. This gap has narrowed due to a decline in girls' performance compared to an improvement in boys'.



KS4 L2 inc E/W & M (% achieving)	2012/13	2013/14	2014/15	2015/16	2016/17
Boys - Mon'shire	51.7	60.6	64.4	62.4	64.6
Boys - Wales	48.7	51.4	54.3	56.1	50.7
Girls - Mon'shire	63.1	71.0	69.7	71.3	69.5
Girls - Wales	57.0	59.7	61.8	64.7	58.8
Difference (boys% - girls%) - Mon'shire	-11.4	-10.4	-5.3	-8.9	-4.9
Difference (boys% - girls%) - Wales	-8.3	-8.3	-7.5	-8.6	-8.1

## Performance of eFSM / non-eFSM Pupils

The FSM/non FSM gap widened in 2017 for the Level 2 threshold inclusive of English/Welsh first language and mathematics from a 41.2 points gap in 2016 to a 43.7 points gap, above the Wales average of 32.4 points. The gap has fluctuated over the past few years, and the gap has widened this year due to the larger decrease in FSM pupil performance than non-FSM pupil performance.



KS4 L2 inc E/W & M (% achieving)	2012/13	2013/14	2014/15	2015/16	2016/17
FSM - Mon'shire	26.7	25.0	39.4	31.0	27.9
FSM - Wales	25.8	27.8	31.6	35.6	28.6
non FSM - Mon'shire	61.6	71.0	71.0	72.2	71.6
non FSM - Wales	58.5	61.6	64.1	66.8	61.0
Difference (FSM% -non FSM%) - Mon'shire	-34.9	-46.0	-31.6	-41.2	-43.7
Difference (FSM% -non FSM%) - Wales	-32.7	-33.8	-32.5	-31.2	-32.4

## LA Rankings

Monmouthshire is now 1<sup>st</sup> in Wales for L2 inc performance, English Language and mathematics.

	L2 inclusive	L2	L1	Capped Point 9	English	Maths	Science
2017	1	2	14	3	1	1	8
2016	3	3	8		2	3	7

L2 inc Eng/Wel & Mat		Level 2 Threshold		Level 1 Threshold		Capped Points 9 Score	
Monmouthshire	67.0	Ceredigion	78.5	Carmarthenshire	97.7	Ceredigion	380.1
Ceredigion	62.4	Monmouthshire	77.3	Gwynedd	97.3	Vale of Glamorgan	374.3
Powys	62.2	Powys	74.3	Powys	96.4	Monmouthshire	368.1
Vale of Glamorgan	60.4	Vale of Glamorgan	73.8	Conwy	96.0	Powys	365.8
Cardiff	58.5	Carmarthenshire	72.6	Ceredigion	95.9	Gwynedd	365.8
Gwynedd	58.1	Gwynedd	70.0	Vale of Glamorgan	95.9	Swansea	361.1
Swansea	57.8	Cardiff	69.9	Swansea	95.4	Carmarthenshire	360.8
Carmarthenshire	57.2	Swansea	69.7	Isle of Anglesey	95.4	Cardiff	360.7
Flintshire	57.0	Bridgend	67.9	Merthyr Tydfil	95.0	Bridgend	356.9
Newport	55.5	Wales	67.0	Rhondda Cynon Taff	94.7	Conwy	351.0
Pembrokeshire	55.3	Conwy	66.8	Pembrokeshire	94.7	Wales	350.9
Wales	54.6	Pembrokeshire	66.0	Flintshire	94.6	Flintshire	346.8
Conwy	53.8	Flintshire	65.8	Wales	94.4	Rhondda Cynon Taff	346.1
Bridgend	53.0	Newport	65.3	Bridgend	94.1	Newport	345.0
South East Wales	52.9	Neath Port Talbot	65.2	Monmouthshire	94.1	Torfaen	341.9
Neath Port Talbot	51.4	Isle of Anglesey	64.5	Caerphilly	94.0	South East Wales	341.9
Torfaen	51.2	South East Wales	63.7	Wrexham	93.8	Pembrokeshire	340.4
Isle of Anglesey	50.5	Denbighshire	63.6	Neath Port Talbot	93.5	Neath Port Talbot	339.5
Denbighshire	50.0	Rhondda Cynon Taff	63.2	South East Wales	93.3	Caerphilly	336.2
Caerphilly	49.9	Torfaen	61.6	Cardiff	93.2	Isle of Anglesey	335.9
Rhondda Cynon Taff	49.8	Wrexham	60.4	Blaenau Gwent	92.8	Wrexham	335.6
Wrexham	49.3	Caerphilly	59.9	Torfaen	92.8	Denbighshire	333.9
Merthyr Tydfil	42.4	Blaenau Gwent	59.2	Newport	92.6	Merthyr Tydfil	326.8
Blaenau Gwent	41.1	Merthyr Tydfil	58.8	Denbighshire	90.2	Blaenau Gwent	320.4

A* - C English Language		A* - C Welsh 1st language		A* - C best of maths		L2 science	
Monmouthshire	74.6	Swansea	86.4	Monmouthshire	74.8	Vale of Glamorgan	90.0
Powys	73.2	Bridgend	83.8	Ceredigion	69.8	Ceredigion	86.9
Ceredigion	69.2	Cardiff	83.3	Powys	68.1	Cardiff	81.4
Vale of Glamorgan	69.2	Pembrokeshire	81.3	Flintshire	67.5	Flintshire	80.0
Carmarthenshire	68.6	Vale of Glamorgan	79.3	Vale of Glamorgan	67.3	Carmarthenshire	78.9
Swansea	66.7	Denbighshire	79.3	Cardiff	65.5	Rhondda Cynon Taff	78.6
Flintshire	66.5	Ceredigion	78.8	Swansea	65.0	Conwy	78.3
Cardiff	66.2	Rhondda Cynon Taff	74.7	Newport	64.3	Monmouthshire	78.1
Pembrokeshire	65.6	Wales	74.2	Carmarthenshire	64.2	Powys	76.9
Conwy	64.0	Torfaen	73.6	Gwynedd	62.9	Bridgend	75.7
Wales	63.7	Carmarthenshire	72.5	Pembrokeshire	62.7	Wales	75.6
Gwynedd	63.5	Neath Port Talbot	72.1	Wales	62.5	Swansea	75.6
Newport	62.9	Gwynedd	72.1	Conwy	62.2	Newport	74.2
Neath Port Talbot	62.7	Flintshire	71.9	South East Wales	61.5	Wrexham	73.6
South East Wales	62.3	Powys	71.1	Bridgend	61.2	Torfaen	72.8
Torfaen	61.8	Conwy	69.9	Torfaen	60.1	Gwynedd	72.8
Bridgend	61.5	South East Wales	68.9	Neath Port Talbot	59.4	Isle of Anglesey	72.3
Isle of Anglesey	60.0	Caerphilly	66.2	Rhondda Cynon Taff	59.3	South East Wales	72.0
Caerphilly	59.9	Isle of Anglesey	65.0	Denbighshire	58.4	Merthyr Tydfil	69.7
Denbighshire	59.2	Wrexham	60.2	Caerphilly	58.3	Caerphilly	69.5
Wrexham	57.9	Monmouthshire	-	Isle of Anglesey	58.0	Neath Port Talbot	67.1
Rhondda Cynon Taff	56.4	Newport	-	Wrexham	56.2	Denbighshire	66.8
Merthyr Tydfil	54.9	Blaenau Gwent	-	Blaenau Gwent	50.2	Blaenau Gwent	65.1
Blaenau Gwent	54.7	Merthyr Tydfil	-	Merthyr Tydfil	49.4	Pembrokeshire	64.9

## Individual Schools

The table below presents the individual schools' data in order of Free School Meal eligibility (lowest to highest).

School	% L2 E,W+M			% L2			% L1			Capped	
	2015	2016	2017	2015	2016	2017	2015	2016	2017		2017
Monmouth	68.4	69.7	74.0	98.9	96.7	79.9	100.0	99.6	97.2		378.5
Caldicot	68.7	69.7	66.2	91.3	88.7	81.6	95.7	97.7	93.0		370.1
King Henry VIII	63.5	71.2	62.3	79.0	95.3	80.1	97.6	98.8	97.9		383.4
Chepstow	70.0	62.9	69.8	97.7	88.8	73.6	98.5	95.8	97.7		369.3
Monmouthshire	66.9	67.0	67.0	91.2	90.2	77.3	97.0	95.9	94.1		368.1
Wales	57.9	60.3	54.6	84.1	84.0	67.0	94.4	95.3	94.4		350.9

School	English (A*-C)			Maths (A*-C)			% L2 Science		
	2015	2016	2017	2015	2016	2017	2015	2016	2017
Monmouth	77.9	78.7	80.7	76.5	75.8	79.9	93.8	84.0	83.9
Caldicot	76.1	79.6	73.1	74.3	73.3	70.6	89.6	84.2	76.6
King Henry VIII	74.3	78.2	68.5	69.5	77.1	79.5	67.7	94.1	84.2
Chepstow	80.8	71.3	82.2	73.1	72.7	76.7	94.6	91.6	73.6
Monmouthshire	76.1	75.5	74.6	72.9	72.8	74.8	86.2	85.4	78.1
Wales	68.6	69.3	63.7	64.4	66.9	62.5	84.0	82.4	75.6

## Free School Meal Benchmark Summary

When FSM benchmark data is used to compare the performance of similar schools, the number of Monmouthshire schools above the median has increased in L2 inc, L2 threshold and English since 2015. In this time, the number of schools in the bottom quarter has increased for L1 and maths.



Individual school benchmark performance is presented in Appendix A.

## Welsh Government Modelled Expectation

The gap between the LA benchmarks for performance modelled on FSM entitlement and actual performance has seen Monmouthshire perform above expected level at L2 inc.,. Performance in the Capped 9 measure remains below expected levels, but the gap between expected and actual performance has decreased each year since 2012.

		2013	2014	2015	2016	2017
Level 2 threshold including English/Welsh and maths	Actual	58	66.7	67.7	68.6	68.8
	Target	60	63.8	65.8	69.2	65.6
	Difference	-2	2.9	1.9	-0.6	3.2
Capped Average Wider Point Score (Capped 9 for 2017)	Actual	334	355.7	358.8	360.4	375.6
	Target	352	360.3	362.4	363.7	378.5
	Difference	-18	-4.6	-3.6	-3.3	-2.9

### Key Stage 5 (Monmouthshire LA Schools only)

#### Performance Data

**Note: Welsh Government are considering new performance measures for future years, which have yet to be decided**

Percentage of students achieving the level 3 threshold (a volume of qualifications at Level 3 equivalent to the volume of 2 A levels at grades A*-E)				
	2016	2017 Results Day	2017 Final SSSPs	Difference from 2016
Monmouthshire	99.1	100.0	97.3	-1.8 ▼
South East Wales	97.9	97.2	96.4	-1.5 ▼
<b>Wales</b>	<b>98.0</b>		<b>97.1</b>	<b>-0.9 ▼</b>

*Cohort size 2016 = 379, Cohort size 2017 = 381*

- When vocational qualifications are taken into account and the Welsh Government's main indicator of post-16 performance, the Level 3 threshold, is considered, performance decreased from 99.1% to 97.3%.
- This 1.8pp decrease is wider than the 1.5pp decrease across the EAS region and 0.9pp across Wales.

## Appendix A – Key Stage 4, School Benchmark Quarter Performance

Subject, AOL or Key Indicator	School Name	2014/15		2015/16		2016/17	
		% Pupils Achieving	Quarter	% Pupils Achieving	Quarter	% Pupils Achieving	Quarter
Level 2 threshold including English/Welsh and Maths	Caldicot School	68.7	1	69.7	2	66.2	3
	Chepstow Comprehensive School	70.0	1	62.9	4	69.8	1
	King Henry VIII Comprehensive	63.5	3	71.2	1	62.3	2
	Monmouth Comprehensive School	68.4	2	69.7	3	74.0	1
Level 2 threshold	Caldicot School	91.3	2	88.7	3	81.6	2
	Chepstow Comprehensive School	97.7	1	88.8	3	73.6	3
	King Henry VIII Comprehensive	79.0	4	95.3	2	80.1	1
	Monmouth Comprehensive School	98.9	1	96.7	1	79.9	2
Level 1 threshold	Caldicot School	95.7	4	97.7	4	93.0	4
	Chepstow Comprehensive School	98.5	2	95.8	4	97.7	4
	King Henry VIII Comprehensive	97.6	3	98.8	3	97.9	3
	Monmouth Comprehensive School	100.0	1	99.6	3	97.2	4
Capped Points (Capped Points 9 from 2016/17)	Caldicot School	352.6	3	348.2	4	370.1	4
	Chepstow Comprehensive School	369.3	2	352.3	4	369.3	3
	King Henry VIII Comprehensive	340.0	4	364.4	2	383.4	2
	Monmouth Comprehensive School	370.7	2	372.6	2	378.5	3
English	Caldicot School	76.1	2	79.6	2	73.1	3
	Chepstow Comprehensive School	80.8	1	71.3	4	82.2	1
	King Henry VIII Comprehensive	74.3	2	78.2	2	68.5	3
	Monmouth Comprehensive School	77.9	3	78.7	3	80.7	2
Mathematics (Combined Mathematics from 2016/17)	Caldicot School	74.3	1	73.3	3	70.6	4
	Chepstow Comprehensive School	73.1	1	72.7	3	76.7	1
	King Henry VIII Comprehensive	69.5	3	77.1	2	79.5	1
	Monmouth Comprehensive School	76.5	2	75.8	3	79.9	1
Science	Caldicot School	89.6	3	84.2	3	76.6	4
	Chepstow Comprehensive School	94.6	2	91.6	3	73.6	3
	King Henry VIII Comprehensive	67.7	4	94.1	2	84.2	2
	Monmouth Comprehensive School	93.8	2	84.0	4	83.9	3